



The Indonesian Population Census 2020 Highlights

BPS – Statistics Indonesia



United Nations Expert Group Meeting, 9-12 February 2021



INTRODUCTION



PC2020 is the 7th Population Census



“Documenting Indonesia toward ONE
POPULATION DATA for Advanced Indonesia”



- **UU No. 16 Tahun 1997** tentang Statistik
- **UU No. 23 Tahun 2006** tentang Administrasi Kependudukan
- **UU No. 52 Tahun 2009** tentang Perkembangan Kependudukan dan Pembangunan Keluarga
- **UU No. 24 Tahun 2013** tentang Perubahan atas UU No. 23 Tahun 2006 tentang Administrasi Kependudukan
- **PP No. 51 Tahun 1999** tentang Penyelenggaraan Statistik



United Nations Recommendation 2017
Population and Housing Census 2020



Perpres No. 39 Tahun 2019
Satu Data Indonesia



Perpres No. 62 Tahun 2019
Strategi Nasional Percepatan Administrasi Kependudukan untuk Pengembangan Statistik Hayati



POPULATION CENSUS 2020

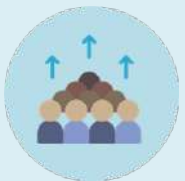


GOALS



Provides data on number, composition, distribution, and characteristics of Indonesian toward **ONE POPULATION DATA IN INDONESIA**

► Completed in 2020



Provides demographic parameters (fertility, mortality, and migration) as well as other individual characteristics for **ppopulation projection** and **SDGs indicators**.

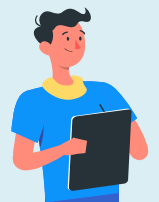
► Will be conducted in September 2021

BASIC IMPROVEMENTS



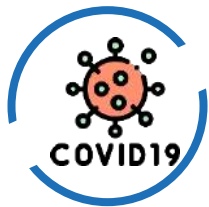
COMBINED METHOD

The use of relevant administrative data (data managed by the ministry of home affairs) completed by sample survey



DATA COLLECTION MODE

Online population census, drop off pick up (DOPU), and interview



POPULATION CENSUS DURING COVID-19 PANDEMIC

Challenges dan responses from various countries conducting population census

Challenges



Implementation of strict health protocols:

- ✓ Reduce face-to-face interaction
- ✓ The use of PPE is a must – for countries conducting census



Budget reallocation for health and economic recovery

Responses of countries



31 countries *delayed or extended the period of population census*

- Indonesia
- USA
- Malaysia, etc



13 countries *conducted census as scheduled or utilizing administrative data or switched to register-based census*

- Japan
- Korea
- Finland, etc



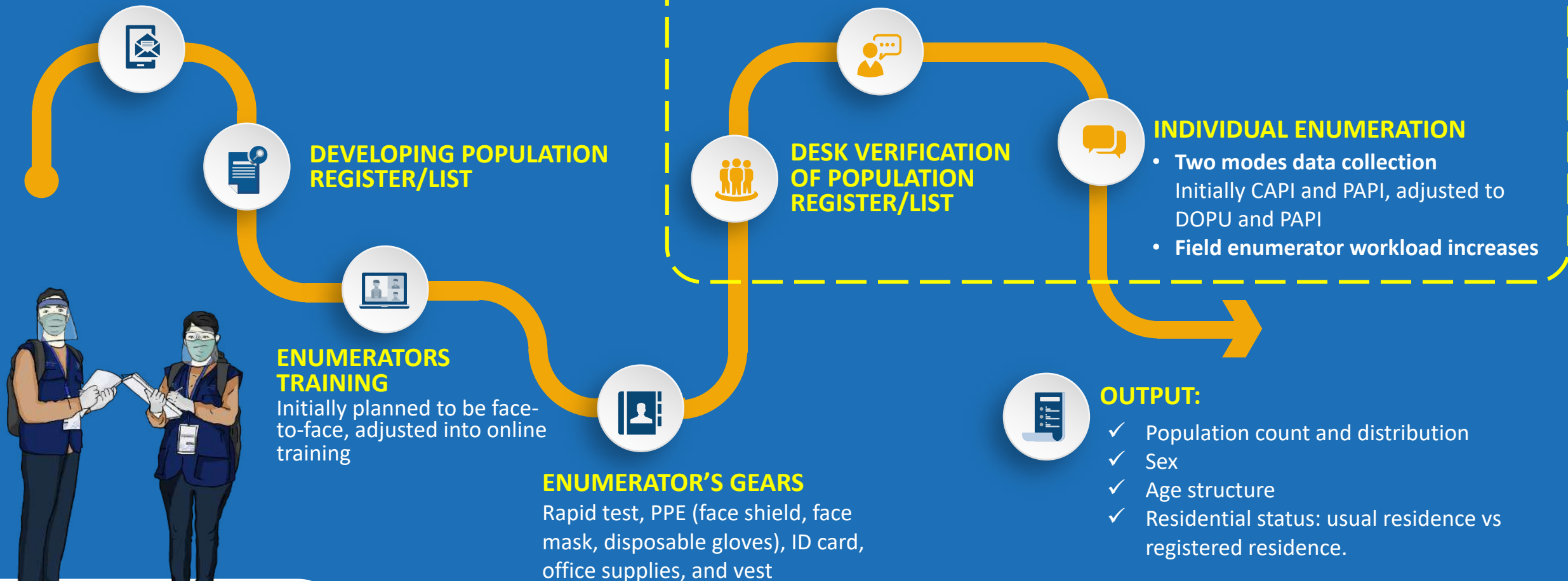
Adjustments made in Population Census 2020

ONLINE POPULATION CENSUS

15 February – 31 March 2020
Extended until 29 May 2020

FIELD ACTIVITIES

Initial plan: JULY 2020
Delayed to: SEPTEMBER 2020

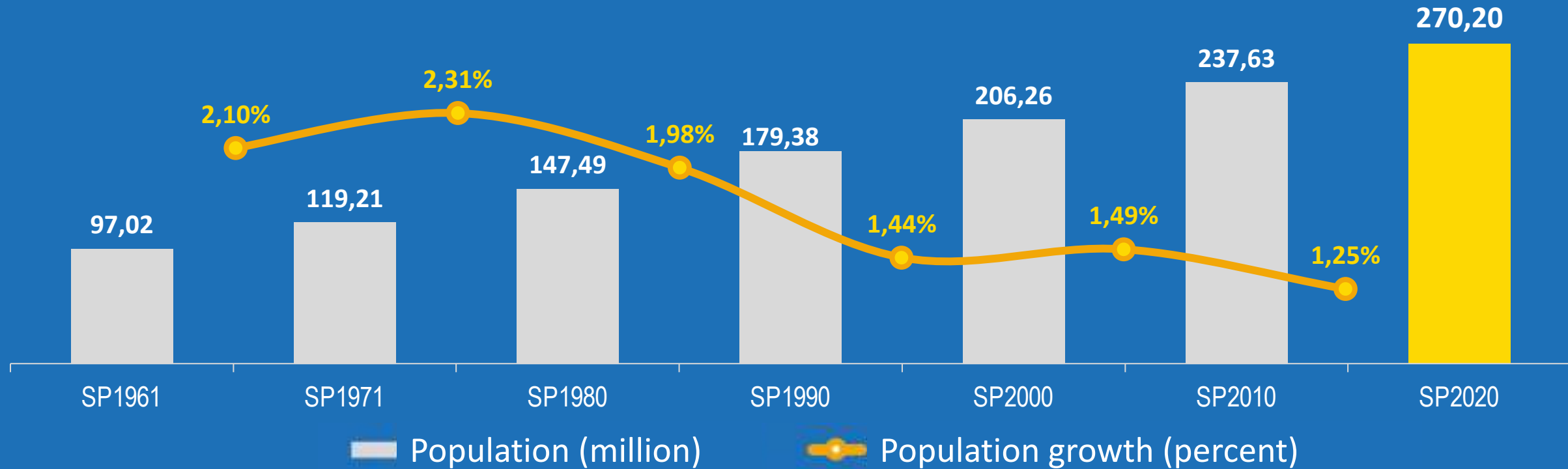


PC2020 RESULTS





Population of Indonesia (Million)



- ✓ Population of Indonesia based on PC2020 (September 2020): **270,20 million**
- ✓ With the total land area about 1,9 mill km², the population density in Indonesia: **141 people/km²**
- ✓ For the period of 2010-2020, the average population growth in Indonesia: **1,25 percent**

Population of Indonesia Based on Synchronization of PC2020 and Administrative Data



PC2020

270,20
million

(September 2020)



Administrative
Data

271,35
million

(December 2020)



$r_{\text{Sep}'20\text{-Des}'20} = 0,14\%^*$

At the national level, the population of Indonesia based on PC2020 is in line with the synchronized administrative data. At the regional level, the difference in population data between PC2020 and administrative data indicates the number of people who have migrated, whether for work, school, or other reasons.

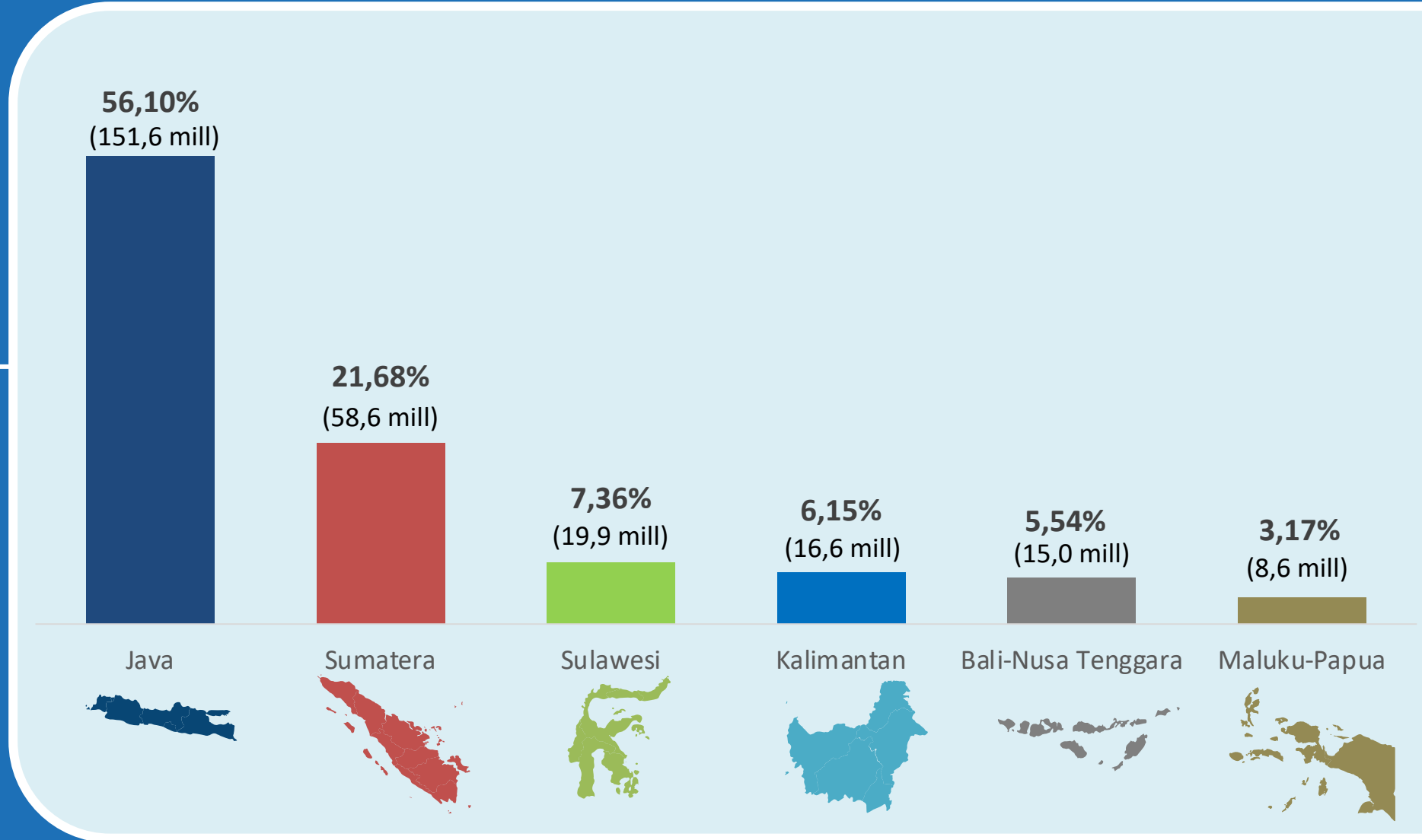
Note:

**Estimated growth rate per month (September-December 2020)*



Population of Indonesia by Island, 2020


56,10 %
(151,6 million)
of Indonesian
are **living in**
Java

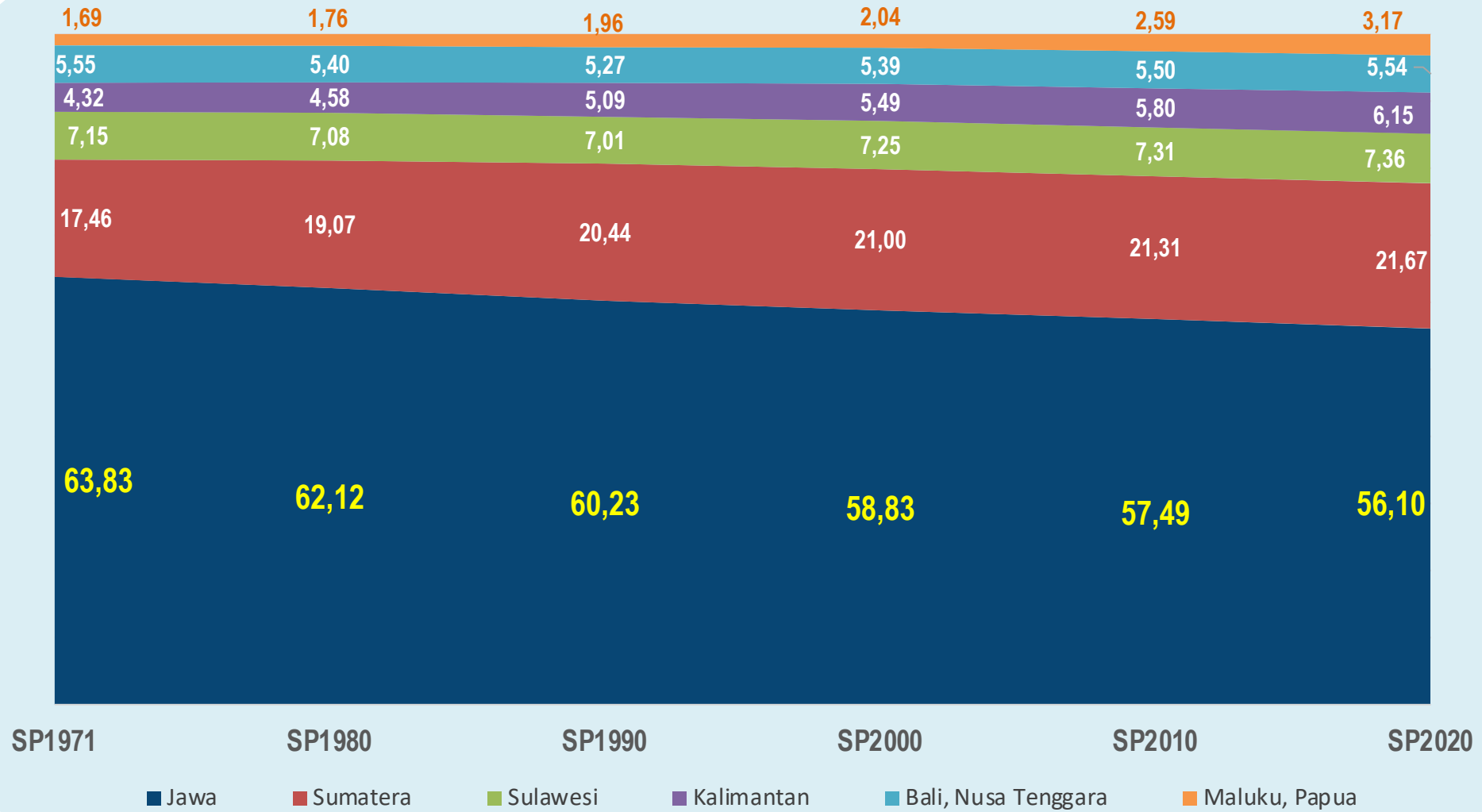




Population of Indonesia by Island, 1971 - 2020



The trend continues...



Population of Indonesia by Residential Status, 2020



91,32%

246,74 million

Usual residence =
registered residence



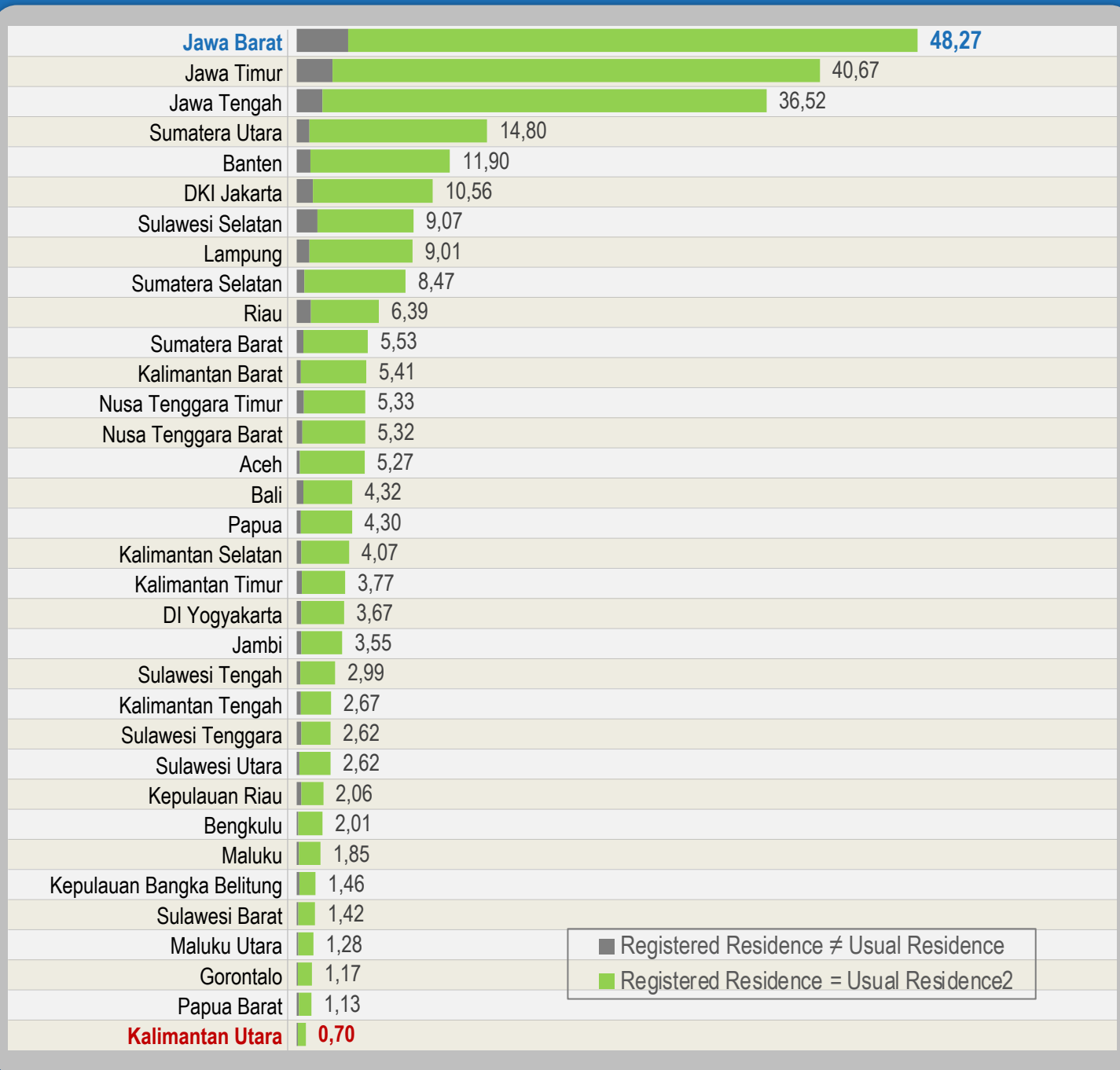
8,68%

23,47 million

Usual residence \neq registered
residence



Note: registered vs usual residence at neighbourhood area level



Population of Indonesia by Province, 2020

- ✓ The most populated province in Indonesia is **West Java: 48,27 million**
- ✓ The least populated province in Indonesia is **North Kalimantan: 0,70 million**

POPULATION BY SEX



50,58%

MALES

136,66 million

50,58%



49,42%

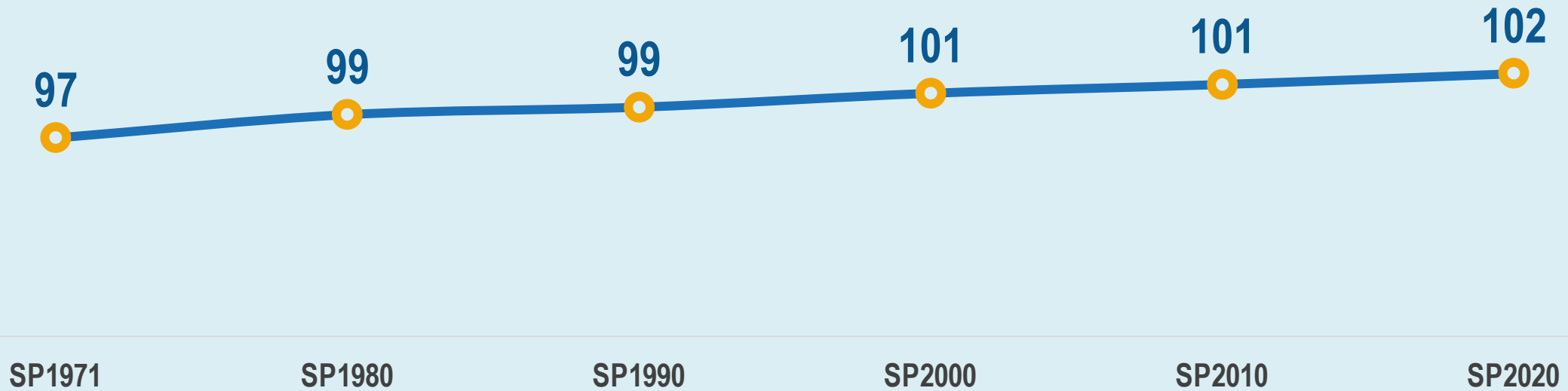
FEMALES

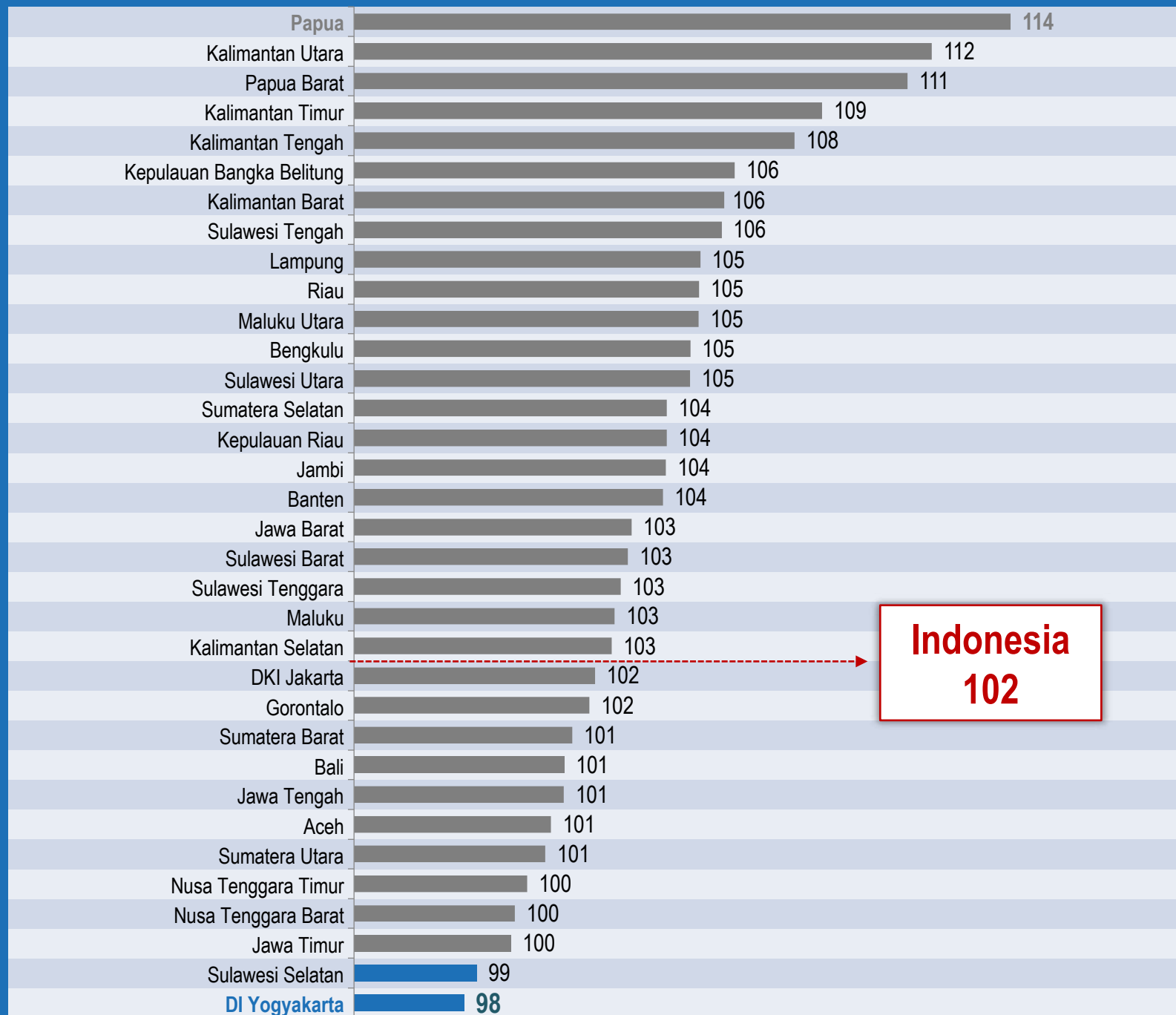
133,54 million

49,42%



SEX RATIO OF INDONESIA, 1971-2020





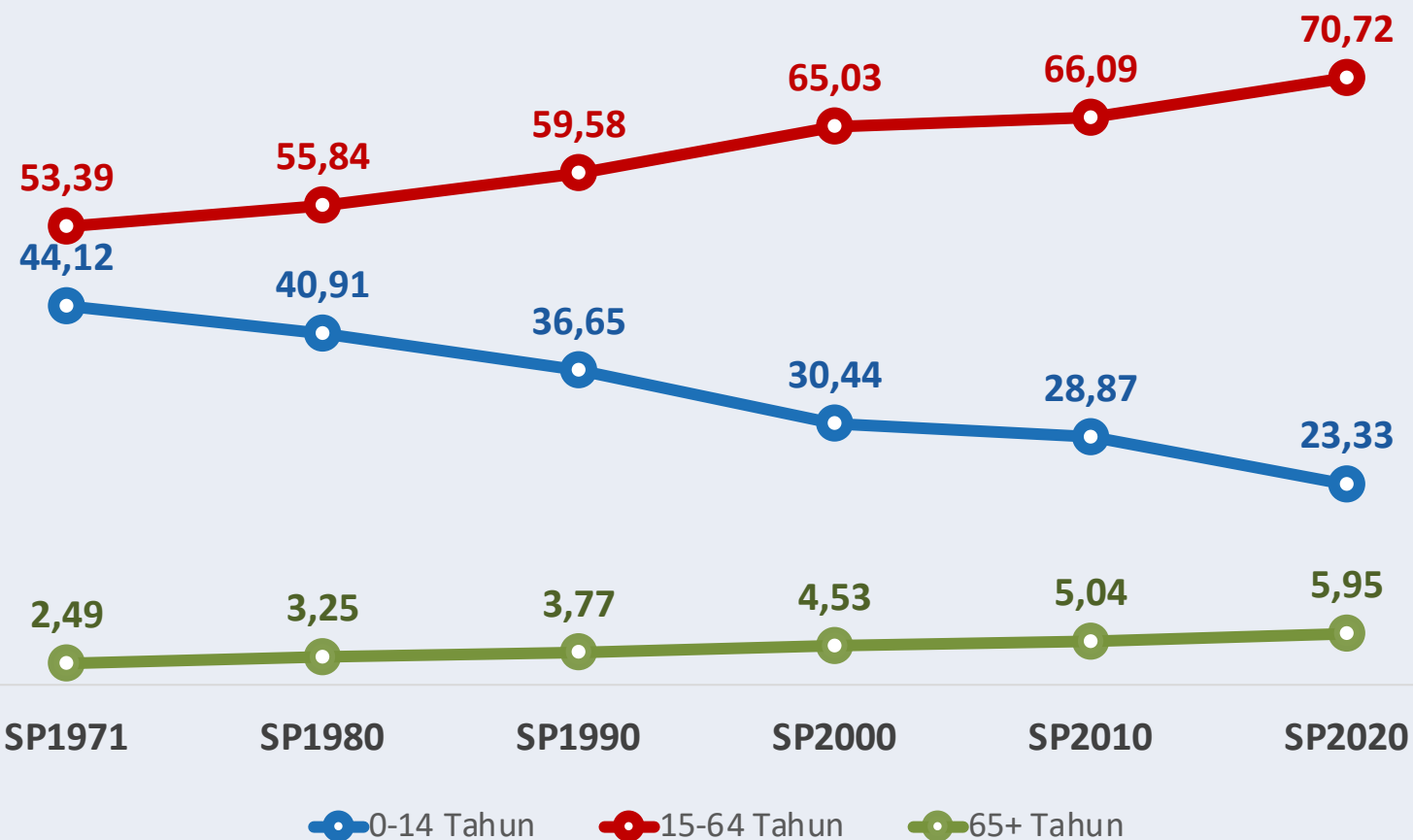
**Indonesia
102**

SEX RATIO by Province in Indonesia, 2020

- ✓ The highest sex ratio: **Provinsi Papua → 114**
- ✓ The lowest sex ratio: **DI Yogyakarta → 98**



Age Distribution of Indonesia, 1971-2020 (Percent)



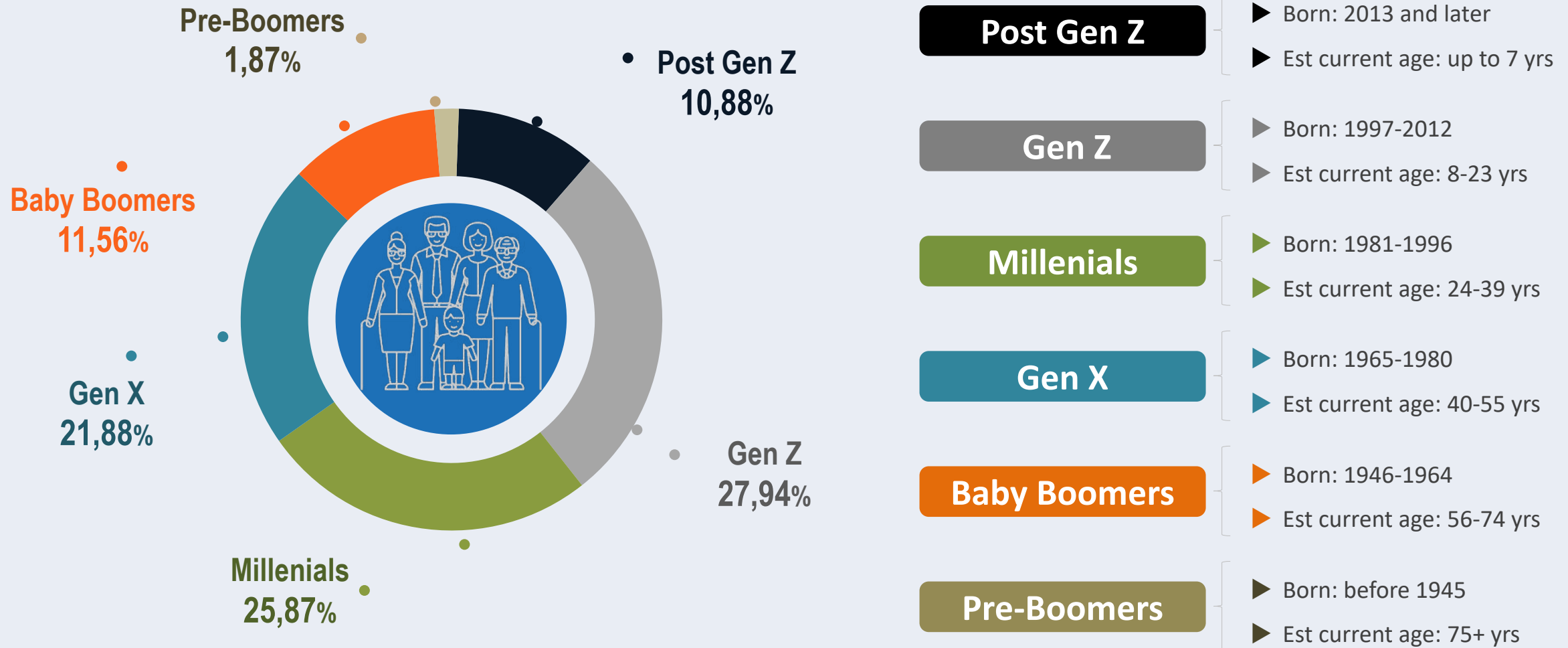
- The proportion of persons aged 0-14 years decrease from 44.12 percent in 1971 to 23.33 percent in 2020
- The working age group (15-64 years) increase from 53.39 percent to 70.72 percent
- The proportion of person aged 65 years and over increase from 2.49 percent to 5.95 percent



Notes for PC2020: 1) N.A. data is not included in the calculation
2) Age data derived from administrative data



Indonesia is dominated by Millennials and Gen Z



Notes for PC2020: 1) N.A. data is not included in the calculation
2) Age data derived from administrative data

Source of classification : William H. Frey analysis of Census Bureau Population Estimates (25 June, 2020)



Follow up in 2021: PC2020 Long Form Enumeration



When

✓ September 2021



SAMPLE SIZE

- ✓ 3,5% of total family (3,05 million families) equal to 268 thousand census blocks
- ✓ Level of estimation: sub-regional level



DATA COLLECTION

Data collection mode:



CAPI (Computer Assisted Personal Interviewing)



PAPI (Pencil and Paper Interviewing)



VARIABLES

(105 Questions)



Individual

(15 questions)



Disability

(12 questions)



Fertility and Mortality

(26 questions)



Education

(5 questions)



Migration

(19 questions)



Housing

(20 questions)



Labor related

(8 questions)



Thank you

For all supports...